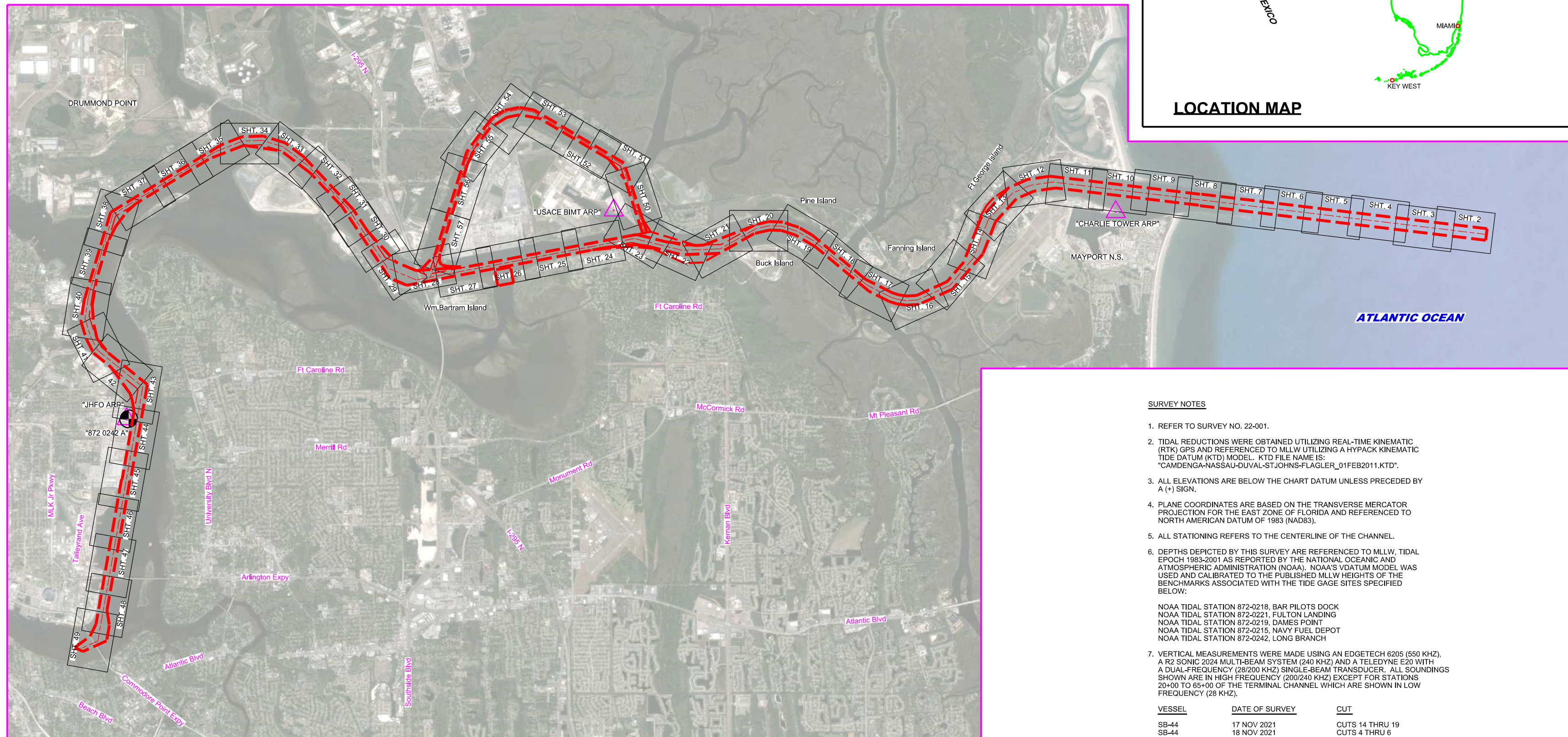


JACKSONVILLE HARBOR, FLORIDA ANNUAL EXAM SURVEY FY22

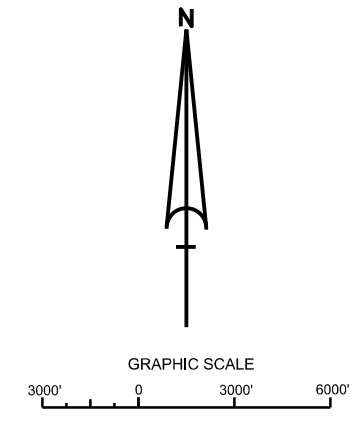


SURVEY NOTES

- REFER TO SURVEY NO. 22-001.
 - TIDAL REDUCTIONS WERE OBTAINED UTILIZING REAL-TIME KINEMATIC (RTK) GPS AND REFERENCED TO MLLW UTILIZING A HYPACK KINEMATIC TIDE DATUM (KTD) MODEL. KTD FILE NAME IS: "CAMDENGA-NASSAU-DUVAL-STJOHNS-FLAGLER_01FEB2011.KTD".
 - ALL ELEVATIONS ARE BELOW THE CHART DATUM UNLESS PRECEDED BY A (+) SIGN.
 - PLANE COORDINATES ARE BASED ON THE TRANSVERSE MERCATOR PROJECTION FOR THE EAST ZONE OF FLORIDA AND REFERENCED TO NORTH AMERICAN DATUM OF 1983 (NAD83).
 - ALL STATIONING REFERS TO THE CENTERLINE OF THE CHANNEL.
 - DEPTHS DEPICTED BY THIS SURVEY ARE REFERENCED TO MLLW, TIDAL EPOCH 1983-2001 AS REPORTED BY THE NATIONAL OCEANIC AND ATMOSPHERIC ADMINISTRATION (NOAA). NOAA'S DATUM MODEL WAS USED AND CALIBRATED TO THE PUBLISHED MLLW HEIGHTS OF THE BENCHMARKS ASSOCIATED WITH THE TIDE GAGE SITES SPECIFIED BELOW:
NOAA TIDAL STATION 872-0218, BAR PILOTS DOCK
NOAA TIDAL STATION 872-0221, FULTON LANDING
NOAA TIDAL STATION 872-0219, DAMES POINT
NOAA TIDAL STATION 872-0215, NAVY FUEL DEPOT
NOAA TIDAL STATION 872-0242, LONG BRANCH
 - VERTICAL MEASUREMENTS WERE MADE USING AN EDGETECH 6205 (550 KHZ), A R2 SONIC 2024 MULTI-BEAM SYSTEM (240 KHZ) AND A TELEDYNE E20 WITH A DUAL-FREQUENCY (28/200 KHZ) SINGLE-BEAM TRANSDUCER. ALL SOUNDINGS SHOWN ARE IN HIGH FREQUENCY (200/240 KHZ) EXCEPT FOR STATIONS 20+00 TO 65+00 OF THE TERMINAL CHANNEL WHICH ARE SHOWN IN LOW FREQUENCY (28 KHZ).
- | VESSEL | DATE OF SURVEY | CUT |
|-----------|--------------------------|------------------------|
| SB-44 | 17 NOV 2021 | CUTS 14 THRU 19 |
| SB-44 | 18 NOV 2021 | CUTS 4 THRU 6 |
| SB-44 | 30 NOV 2021 | CUTS 52 THRU 55 |
| SB-44 | 02 DEC 2021 | CUTS 50-51 |
| SV SALZER | 08-09 DEC 2021 | BAR CUT-3 |
| SV SALZER | 09-10 DEC 2021 | CUT-7 |
| SV SALZER | 09 DEC 2021 | BAR CUT-3 |
| SV SALZER | 10, 13 DEC 2021 | CUTS 39 THRU 42 |
| SB-44 | 28 DEC 2021 | CUTS 45 THRU 49 |
| SB-44 | 28 DEC 2021 | CUTS 43-44 |
| SV SALZER | 12 DEC 2021, 10 JAN 2022 | CUTS A & B |
| SV SALZER | 12-13 JAN 2022 | CUTS F, G AND 42 |
| SV SALZER | 13 JAN 2022 | CUTS 8 THRU 13 |
| SV SALZER | 19 JAN 2022 | UPPER TERMINAL CHANNEL |
| SV WELLS | 24-25 JAN 2022 | LOWER TERMINAL CHANNEL |
- THIS SURVEY WAS PERFORMED USING REAL-TIME KINEMATIC (RTK) GPS POSITIONING WITH THE FOLLOWING REFERENCE BASE LOCATIONS:
REFERENCE BASE LOCATED AT "CHARLIE TOWER ARP" (OPUS PID: BBDC09)
REFERENCE BASE LOCATED AT "USACE BIMT ARP" (OPUS PID: BBGM25)
REFERENCE BASE LOCATED AT "USACE JHFO ARP" (OPUS PID: BBGL18)
 - AIDS TO NAVIGATION WERE LOCATED DURING THIS SURVEY AS WELL AS DURING SURVEY 21-247.
 - THE INFORMATION DEPICTED ON THIS MAP REPRESENTS THE RESULTS OF SURVEYS MADE ON THE DATES INDICATED ABOVE AND CAN ONLY BE CONSIDERED AS INDICATING THE GENERAL CONDITIONS AT THAT TIME. THIS CHART IS SOLELY FOR THE DISTRIBUTION OF AVAILABLE DEPTHS AT THE TIME OF THE SURVEY.
 - SURVEY ACCURACY PERFORMANCE STANDARDS, QUALITY CONTROL, AND QUALITY ASSURANCE REQUIREMENTS WERE FOLLOWED DURING THIS SURVEY IN ACCORDANCE WITH USACE EM 1110-2-1003, HYDROGRAPHIC SURVEYING, 30 NOV 2013.

LEGEND	
	MONUMENT
	LIGHTED BEACON
	GREEN DAYBEACON
	RED DAYBEACON
	RED LIGHTED BUOY
	GREEN LIGHTED BUOY
	CAN BUOY
	NUN BUOY
	TIDE STAFF
	PROJECT DEPTH

AUTHORIZED PROJECT DEPTH	
42 FT	CUT - 3 (BAR CUT), STA. 0+00 THRU STA. 210+00
40 FT	CUT - 3 (BAR CUT) STA. 210+00 THRU TERMINAL CHANNEL STA. 65+00.
34 FT	TERMINAL CHANNEL, STA. 65+00 THRU STA. 186+21 (APPROX. 1200 FEET UPSTREAM FROM THE HART BRIDGE NEAR COMMODORE POINT).
30 FT	CUT-A, STA. 0+00 THRU 53+10.21
38 FT	OLD RIVER BLOUNT ISLAND (WESTSIDE) CHANNEL CUT-F, STA. 10+00 - NEAR WOODEN FISHING BRIDGE PIER THRU INTERSECTION OF CUT - 42 (DAMES PT. - FULTON CUT - OFF

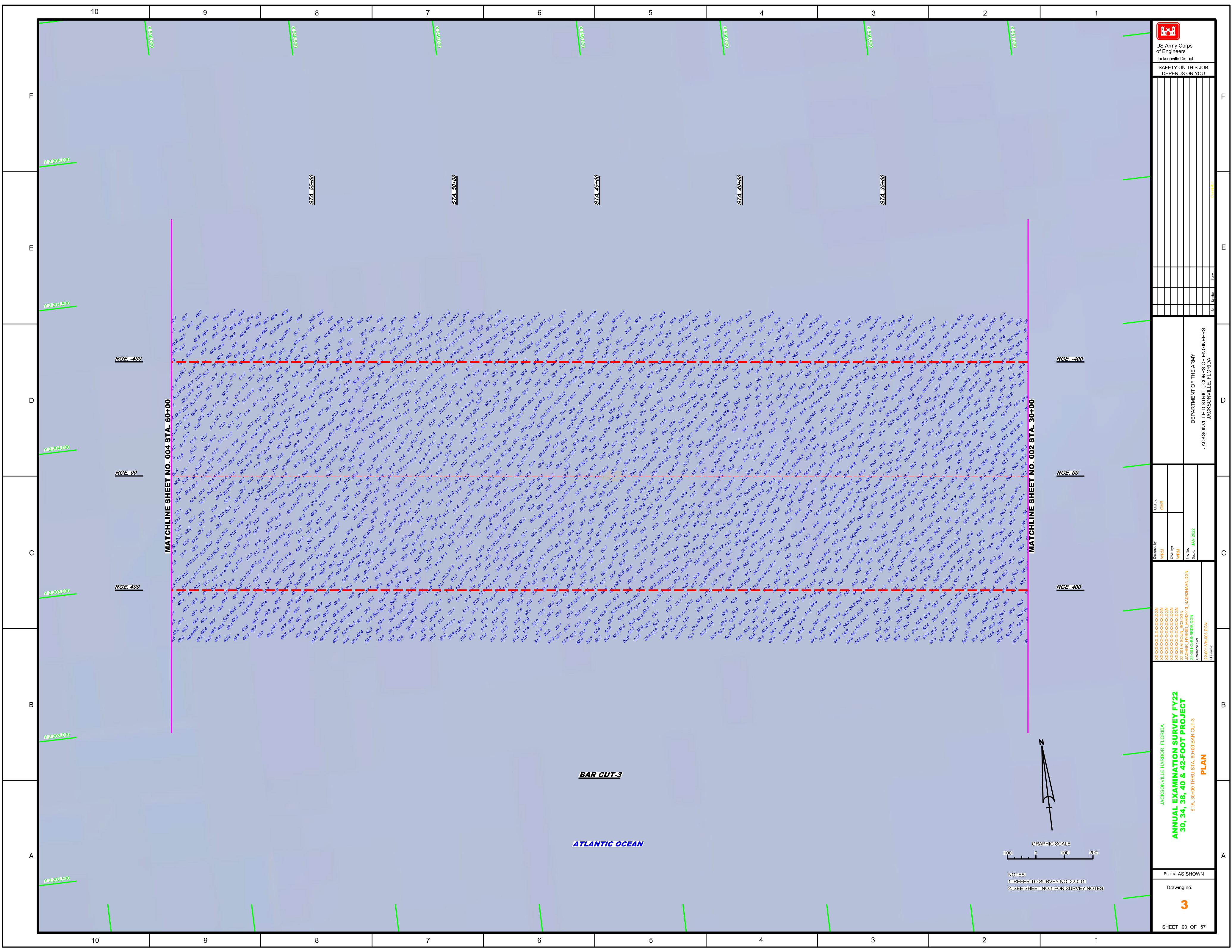


US Army Corps of Engineers
Jacksonville District
SAFETY ON THIS JOB
DEPENDS ON YOU

DEPARTMENT OF THE ARMY
JACKSONVILLE DISTRICT, CORPS OF ENGINEERS
JACKSONVILLE, FLORIDA

ANNUAL EXAMINATION SURVEY FY22
30, 34, 38, 40 & 42-FOOT PROJECT
INDEX, LOCATION AND VICINITY
MAP

Scale: AS SHOWN
Drawing no. 1
SHEET 01 OF 57



US Army Corps of Engineers
Jacksonville District

SAFETY ON THIS JOB
DEPENDS ON YOU

DEPARTMENT OF THE ARMY
JACKSONVILLE DISTRICT, CORPS OF ENGINEERS
JACKSONVILLE, FLORIDA

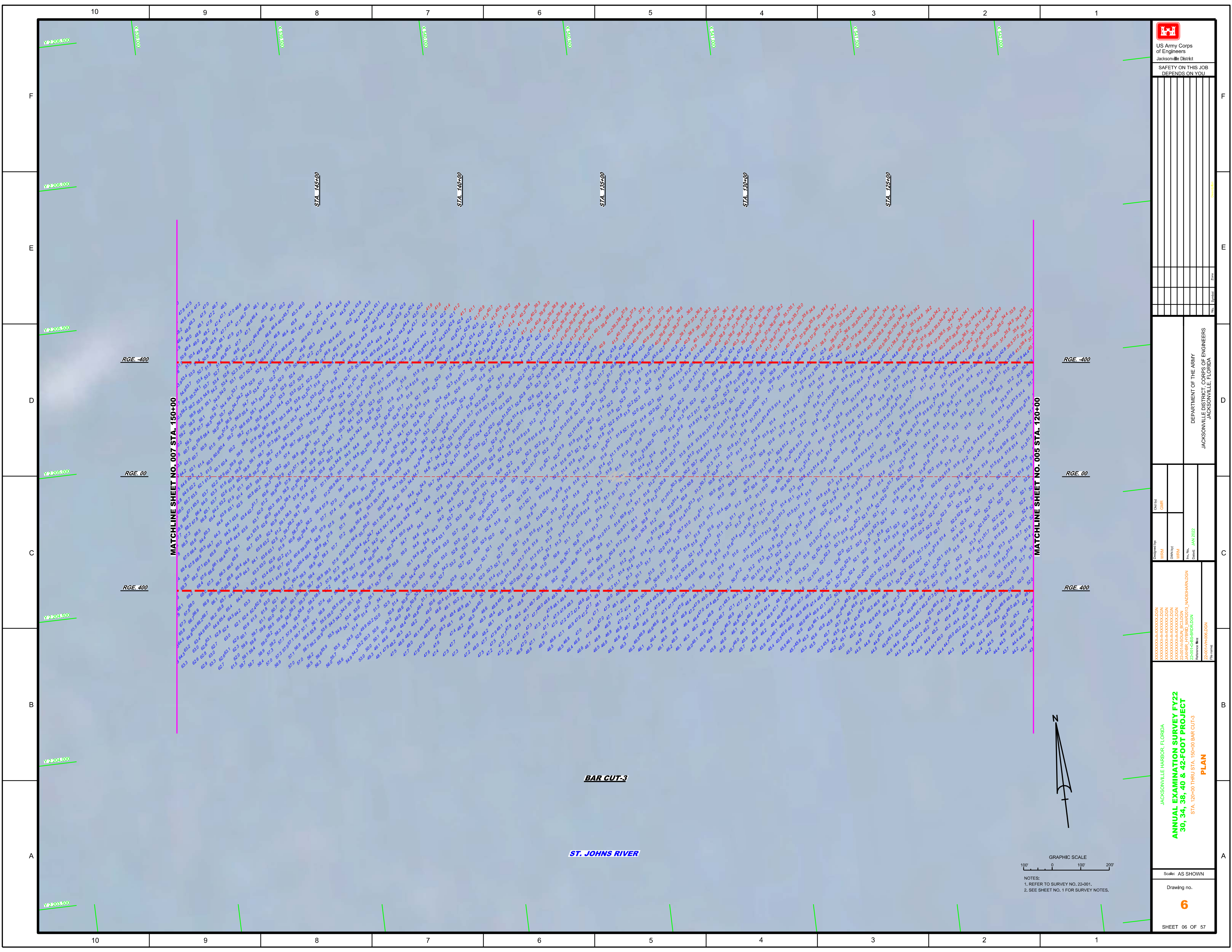
Designed by: WRM
Checked by: GHR
Drawn by: WRM
Reviewed by: JAWHR (PRB) MAR2013, JAWHR (ARD) JAW
Date: JAN 2022

JACKSONVILLE HARBOR, FLORIDA
ANNUAL EXAMINATION SURVEY FY22
30, 34, 38, 40 & 42-FOOT PROJECT
STA. 30+00 THRU STA. 60+00 BAR CUT-3
PLAN

Scale: AS SHOWN
Drawing no. **3**
SHEET 03 OF 57



NOTES:
1. REFER TO SURVEY NO. 22-001.
2. SEE SHEET NO.1 FOR SURVEY NOTES.





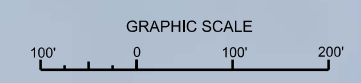
 US Army Corps of Engineers
 Jacksonville District
 SAFETY ON THIS JOB
 DEPENDS ON YOU

DEPARTMENT OF THE ARMY
 JACKSONVILLE DISTRICT, CORPS OF ENGINEERS
 JACKSONVILLE, FLORIDA

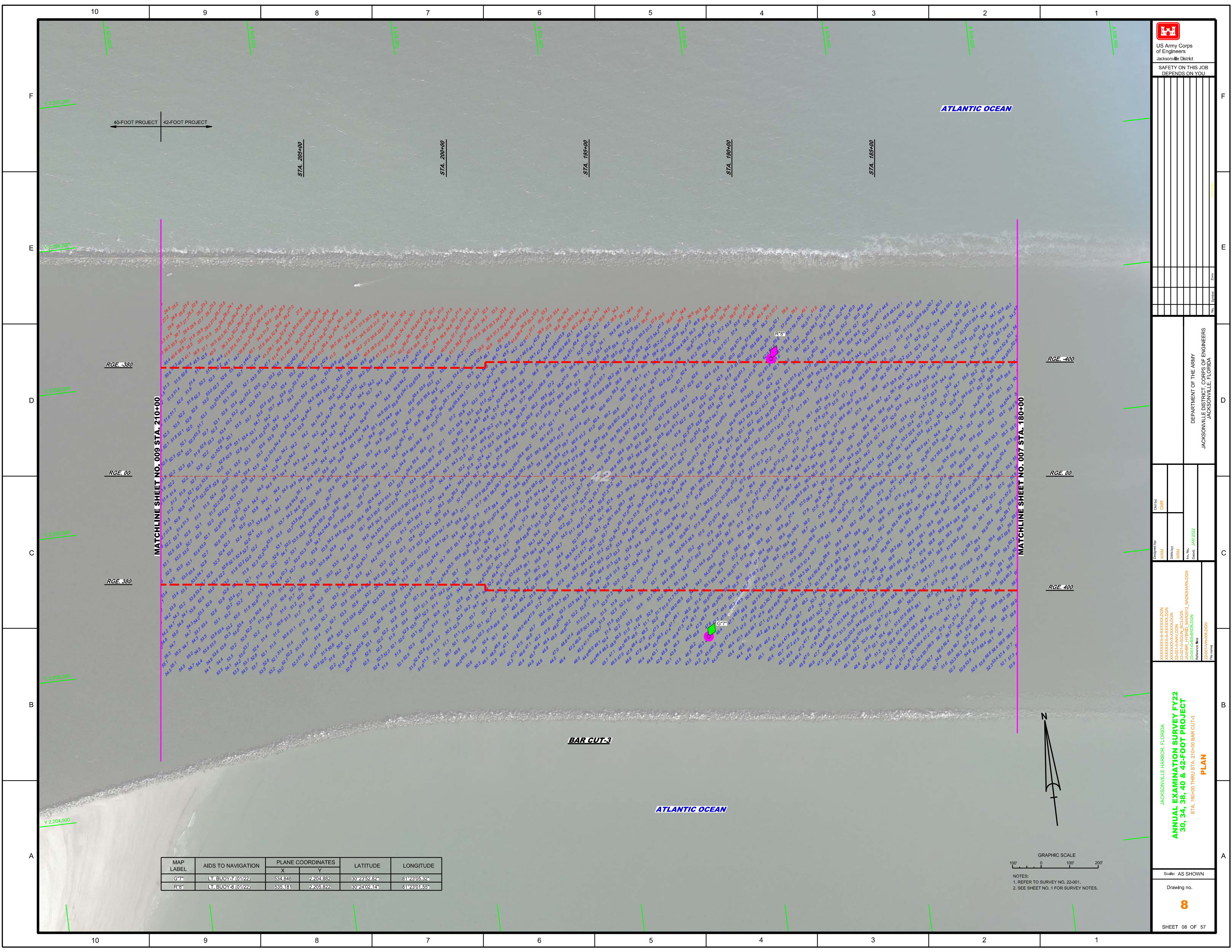
Designed by: **WRM**
 Checked by: **GHR**
 Drawn by: **WRM**
 Date: **JAN 2022**
 Reference File: **Z:\2001-00\HARBOUR\0003\0003\HARBOUR.DGN**

JACKSONVILLE HARBOR, FLORIDA
ANNUAL EXAMINATION SURVEY FY22
30, 34, 38, 40 & 42-FOOT PROJECT
 STA. 120+00 THRU STA. 150+00 BAR CUT-3
PLAN

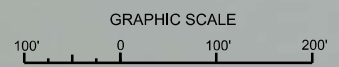
Scale: AS SHOWN
 Drawing no. **6**
 SHEET 06 OF 57



NOTES:
 1. REFER TO SURVEY NO. 22-001.
 2. SEE SHEET NO. 1 FOR SURVEY NOTES.



MAP LABEL	AIDS TO NAVIGATION	PLANE COORDINATES		LATITUDE	LONGITUDE
		X	Y		
G7*	LT. BUOY-7 (0122)	534,848	2,204,882	30°23'52.82"	81°23'05.32"
R8*	LT. BUOY-8 (0122)	535,181	2,205,822	30°24'02.14"	81°23'01.55"



NOTES:
1. REFER TO SURVEY NO. 22-001.
2. SEE SHEET NO. 1 FOR SURVEY NOTES.

